

Natural solid wood

NOVATOP SWP
Multilayer solid wood panel

NOVATOP 

NOVATOP SWP

MULTILAYER SOLID WOOD PANEL

Multilayer panels NOVATOP are manufactured from natural wood under strict environmental regulations. As the first Czech manufacturer we obtained the Natureplus certificate in 2008.

DESCRIPTION

Multilayer panels NOVATOP are made of coniferous sawnwood dried to 8% (larch 12%). Each layer of the panel consists of lamellas of solid wood. The three-layer panel consists of one middle layer rotated by 90° relative to the outer layers. The five-layer panel has one middle layer rotated by 90° relative to the two parallel surface layers on each side. The thickness of the layers can differ and determines the final thickness of the panel. The lamellas of the middle layer are glued longitudinally, and lengthwise they are connected with the butted joint or they can be continuous. Their thickness is a maximum of 60 mm.

The outer layers are made of continuous lamellas with a thickness of 6 or 9 mm and a width of 93-143 mm. On every panel, there is always the same width of the surface lamellas whose right side faces the surface. The longitudinal joints of the lamellas are glued together. The adhesive used is waterproof and the surface lamellas are glued according to AW 100, or possibly D4 according to EN 204.

The quality of sanding corresponds to the grain size of 100 (coarser sanding is made to order).

ADVANTAGES

- The character of natural solid wood
- Natural non-toxic material
- Dimensional stability
- High tensile strength
- Excellent workability of surfaces and edges
- Large format
- Easy manipulation and assembly
- Very wide range of applications in the interior and the exterior



NOVATOP SWP

3-layer panels

Wood: Central European spruce, Nordic spruce, Siberian larch, silver fir
Standard thicknesses (mm): 14 (4-6-4), 16 (5-6-5), 19 (6-7-6), 21 (6-9-6), 27 (6-15-6), 27 (9-9-9), 32 (9-14-9), 42 (9-24-9), 50 (9-32-9), 60 (9-42-9)
Standard widths (mm): 1,040, 1,250, 2,100, 2,500
Standard lengths (mm): 2,500, 2,750, 3,000, 4,000, 5,000, 6,000
Non-standard formats (mm): According to the individual demand

Types of panels:

NOVATOP SWP
NOVATOP STATIC
NOVATOP FREE – formaldehyde-free gluing
NOVATOP EASY
NOVATOP ALTHOLZ



NOVATOP STATIC



5-layer panels

Wood: Central European spruce
Standard thicknesses (mm): 45 (9-9-9-9-9), 60 (9-9-24-9-9)
Standard widths (mm): 1,040, 1,250, 2,100, 2,500
Standard lengths (mm): 5,000, 6,000
Types of panels: NOVATOP STATIC L, NOVATOP STATIC Q

QUALITY

A, B, C, D and their combination. Classification of quality of surface lamellas is performed in accordance with EN 13017-1 and internal regulations of AGROP NOVA a.s.



14 mm (4-6-4)	 spruce
16 mm (5-6-5)	
19 mm (6-7-6)	
21 mm (6-9-6)	 larch
27 mm (6-15-6)	
27 mm (9-9-9)	
32 mm (9-14-9)	 silver fir
42 mm (9-24-9)	
50 mm (9-32-9)	
60 mm (9-42-9)	
45 mm (9-9-9-9-9)	
60 mm (9-9-24-9-9)	

EXAMPLES OF APPLICATION

Multilayer panels NOVATOP can be machined with all standard woodworking tools and machines as solid wood can. As for the surface finish, all methods used for solid wood are suitable. When used in the outdoor environment, the natural properties of solid wood must be taken into account.

IN THE BUILDING INDUSTRY

Ceiling and floor structures, load bearing shells of sloping roofs, roof overhangs, cladding, facades, extensions, installations, structures of halls, carpentry structures, etc. Preferred quality: B/C, C/C, C/D.

IN CARPENTRY

Wall, ceiling and partition cladding, floors, staircase steps, furniture and interior equipment, door frames, doors, shutters, production of packaging, boxes, etc. Preferred quality: A/B, AB/B, B/B, B/C.



SWP WITH STRUCTURED SURFACE

3-layer solid wood panels with surface finish

Types of surface: Fine and coarse brushing, chopping
Wood: Spruce, larch
Standard thicknesses (mm): 14, 16, 19, 21, 27, 32, 42, 50, 60
Standard formats (mm): up to 2,100 x 6,000, minimum length of 1,000

EXAMPLES OF APPLICATION
 Manufacture of furniture and interior equipment, cladding of walls and ceilings.



NOVATOP ALTHOLZ

3-layer solid wood panel with a covering layer made of old wood

Types of surfaces: 1A, 4A, 4B, 4C
Wood: Spruce
Standard thickness (mm): 19 (6-7-6)
Standard width (mm): 1,250
Standard length (mm): 2,600, 2,800, 3,000, 3,200
Types of boards:
 4 - old sunburnt boards, manually brushed,
 1 - beams and boards from a roof truss, manually brushed

EXAMPLES OF APPLICATION
 Manufacture of furniture and interior equipment, cladding of walls and ceilings.





NOVATOP EASY

Spring & groove + chamfered edge

3vrstvá masivní deska

Machining: Spring & groove + chamfered edge (4 sides)

Wood: Spruce

Standard thickness (mm): 19, 27

Netto format (mm): 690 x 2,500, 625 x 2,500

Quality: B/C, C/C, C/D

Packaging: 48 or 32 pcs

Application: Interior, exterior

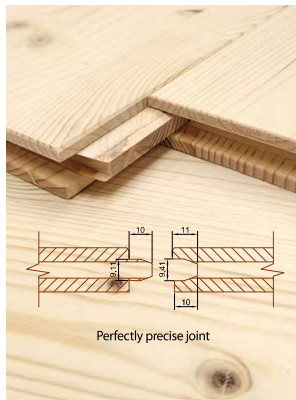
Precision machining:

Machining tolerance in the thickness of ± 0.4 mm

Width and length tolerance ± 0.5 mm

Tolerance of sanding thickness ± 0.2 mm

Surface finishes and other machining according to the individual demand.



MACHINING OPTIONS

3-layer panels, 5-layer panels

STANDARD

Grooves from the sides, finger joint.

NON-STANDARD

Perforations into various profiles (milling, cutting, drilling), milling of grooves and openings of various shapes and others, according to the individual demand.

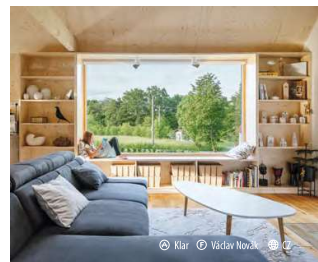
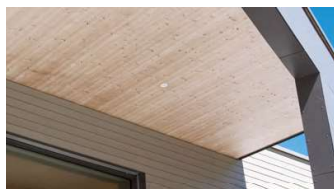
Wood: Spruce, fir

Standard thickness (mm): up to 60 mm

Formats: up to 2,500 x 6,000 mm

Quality: B/B, B/C, C/C, C/D





REFERENCE

SURFACE FINISHES

3-layer solid wood panels with surface finish

Wood: Spruce, fir
Quality: B/C, C/C, C/D
Standard thickness (mm): 19, 27
Standard length (mm): 2,500, 3,000
Standard width (mm): 625, 690, 1,040, 1,250
Max. format: 1,250 x 5,000 mm

SURFACE FINISH FOR THE EXTERIOR
View side of SWP: Pre-final or final surface
Bottom side of SWP: Primer

TYPE OF SURFACE FINISH
 Water soluble, UV stable
 Glazing paint: Remmers Induline LW-760
 Varnish: Remmers Induline DW-660

COLOUR TONE
Glazing paint: Transparent with white pigments
Varnish: Covering with white pigments

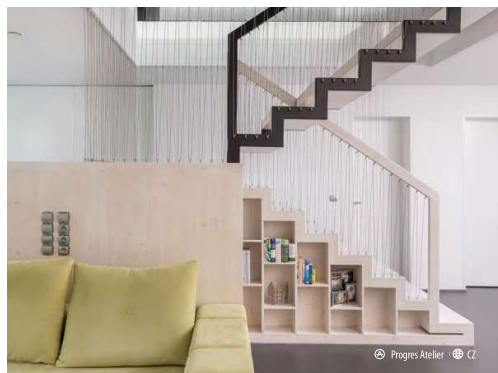
APPLICATION
 Application in the exterior to places with protection from direct weather conditions – e.g. roof soffits, pergola

SURFACE FINISH FOR THE INTERIOR
View page SWP: Primer or final surface

TYPE OF SURFACE FINISH
 Glazing paint, water-soluble glazing paint, UV stable
 Adler Lignovit Interior UV 100

COLOUR TONE
 Natur – transparent without pigments
 Zugspitze – with white pigments
 Mont Blanc – with white pigments
 Silberrücken – grey (final paint only)

APPLICATION
 Interior application only





3D LIBRARY

Real textures
for a perfectly
visual world

PBR standard / 8K





Certificates:



Manufacturer: AGROP NOVA a.s.

Ptenský Dvůrek 99 • 798 43 Ptení • Czech Republic • Phone: +420 582 397 852
novatop-swp@agrop.cz • www.novatop-swp.com



novatopcom

Information



Reference



Download



V: 01/23